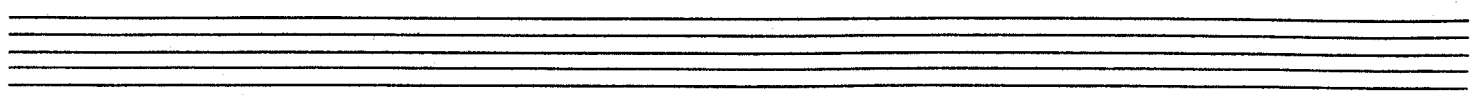
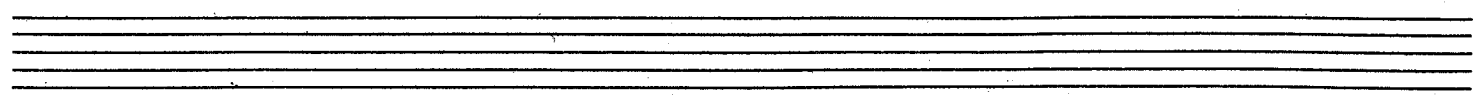
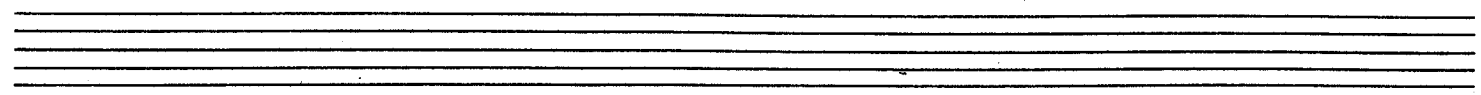
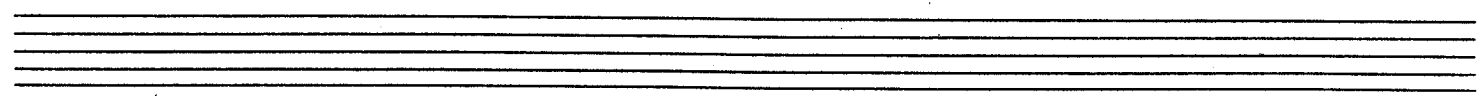
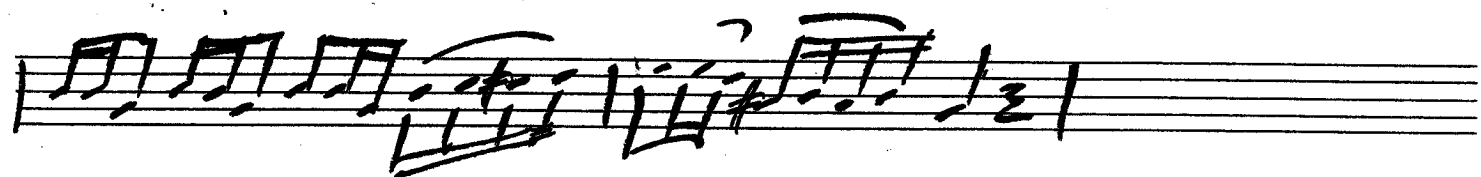
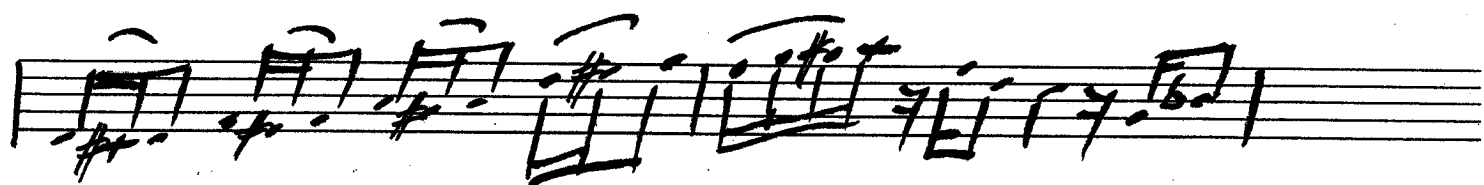
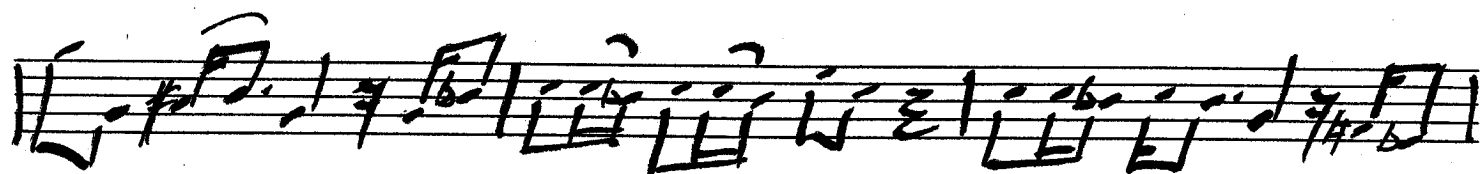
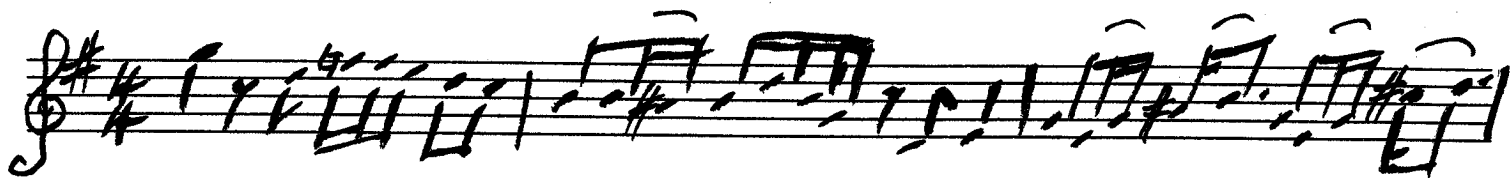
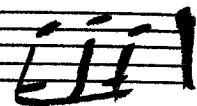


TRPT SOLO

BIG MAMA CASS



# Big Mama Cass

AUTHORIZED DUPLICATION  
IS PROHIBITED BY I.A.

composed & arranged  
by Don Sebesky

1ST Eb ALTO SAX  
BRIGHT JAZZ ROCK

3

whrots

5

mf

mp

SOLI

f

17

poco

SOLI

f

29

LIP GLISS

f

whrots

ff

SOLO  
D7

3114

COPYRIGHT 1968 BY THURSDAY MUSIC CORP. - USED BY PERMISSION  
ALL RIGHTS RESERVED - INTERNATIONAL COPYRIGHT SECURED - MADE IN U.S.A.  
SOLE SELLING AGENT FOR THIS ARRANGEMENT: KENDOR MUSIC, INC., DELEVAN, NY 14042

# ALTO x2

~~ALTO x2~~

SOLO - 1<sup>st</sup> TIME ONLY

43 OPTIONAL OPEN FOR SOLOS

D<sup>7</sup>

Musical staff with rhythmic slashes. Measure numbers 2 and 4 are indicated above the staff.

G<sup>9</sup>

Bb<sup>9</sup>

A<sup>9</sup> sus

A<sup>9</sup>

D<sup>7</sup>

G<sup>7</sup>

Musical staff with rhythmic slashes and chord symbols: G<sup>9</sup>, Bb<sup>9</sup>, A<sup>9</sup> sus, A<sup>9</sup>, D<sup>7</sup>, G<sup>7</sup>.

D<sup>7</sup>

G<sup>7</sup>/<sub>A</sub>

D<sup>7</sup>

G<sup>7</sup>/<sub>A</sub>

D<sup>7</sup>

G<sup>7</sup>/<sub>A</sub>

END SOLO

2 SOLI

UP BL

Musical staff with rhythmic slashes and performance instructions: D<sup>7</sup>, G<sup>7</sup>/<sub>A</sub>, D<sup>7</sup>, G<sup>7</sup>/<sub>A</sub>, D<sup>7</sup>, G<sup>7</sup>/<sub>A</sub> END SOLO, 2 SOLI, UP BL.

f

56

Musical staff with a melodic line.

whispers

Musical staff with a melodic line and the word "whispers".

pp

f

Musical staff with a melodic line and dynamics: pp, f.

68

Musical staff with a melodic line.

Ritoco

SOLI

f

ff

Musical staff with a melodic line and "Ritoco".

Musical staff with a melodic line and "SOLI".

FAT!

Musical staff with a melodic line and "FAT!".

UNAUTHORIZED DUPLICATION IS PROHIBITED

composed & arranged by Don Seb

2ND Eb ALTO SAX

# Big Mama Cass

BRIGHT JAZZ ROCK

5

17

4 11

f

3 SOLI LIP BLISS 29

whrns

ff

2 43 OPT. OPEN FOR SOLOS 8 1 2 SOLI LIP BL

56 T.C. to 1st Trump Plus lead line

whrns

68

f poco

2 ff

REPLICATION BY LAW

# 2ND Bb TENOR SAX

# Big Mama Cass

composed - arrange  
by Don Sebesky

BRIGHT JAZZ ROCK

4 [5] 11 [17]

3 SOLO LIP GLISS [29] poco

f w/keys [43] OPT. OPEN FOR SOLOS 4 8

mf [56] SOLO LIP GLISS

f w/keys

[68] f

3 poco FINE

ff

E♭ BARITONE SAX

BRIGHT JAZZ ROCK

# Big Mama Cass

ADAPTED BY

d & arr.  
on Sebes

5. 20 Solo

5 *ff* 7 *SOLI* *f* 17 7 *SOLI* *f*

29 7 *f* *ffp*

SOLO

43 OPT. OPEN FOR SOLOS 4X  
PIANO LAST X 6 *SOLI* *mp* *mf*

56 7 *f* 2

68 8 *SOLI* *f* *SOLI* *ff*

14



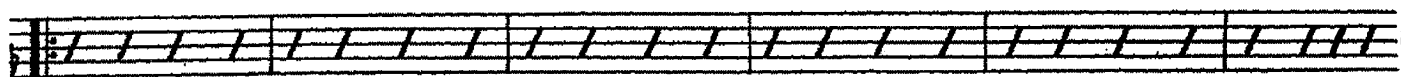
13 OPT. OPEN FOR SOLOS TRDM

GUITAR TENOR PIANO TRUMPET

F7

Bb9

Db9



C9sus

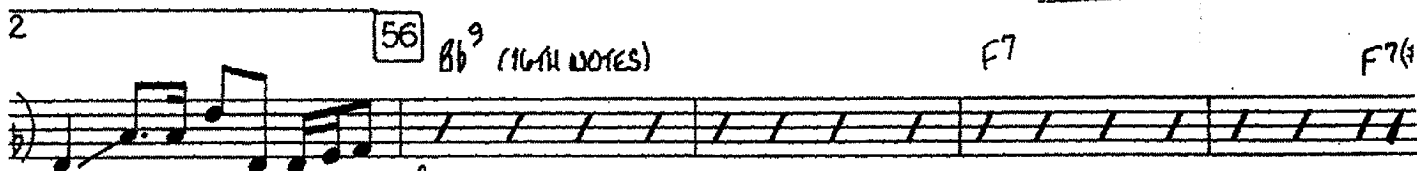
C9 F7

Bb7 F7

Bb7 F7

Bb7 F7

B



56 Bb9 (16TH NOTES)

F7

F7#

f



C9sus

G7

C9sus

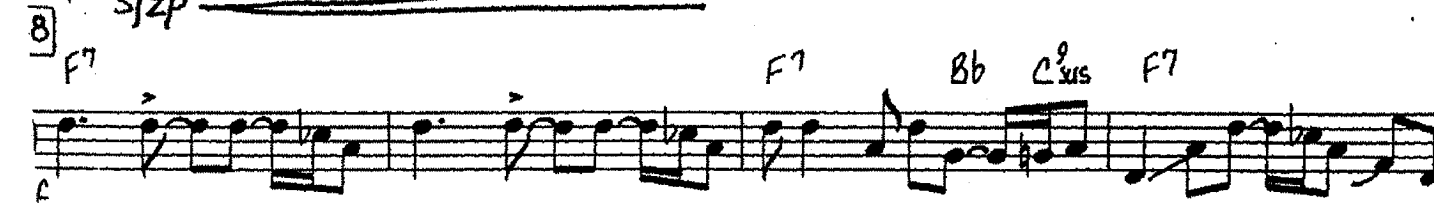
G7

C7



sfzp

2



8 F7

F7

Bb

C9sus

F7



Bb9

Db9

C9sus



sfzp